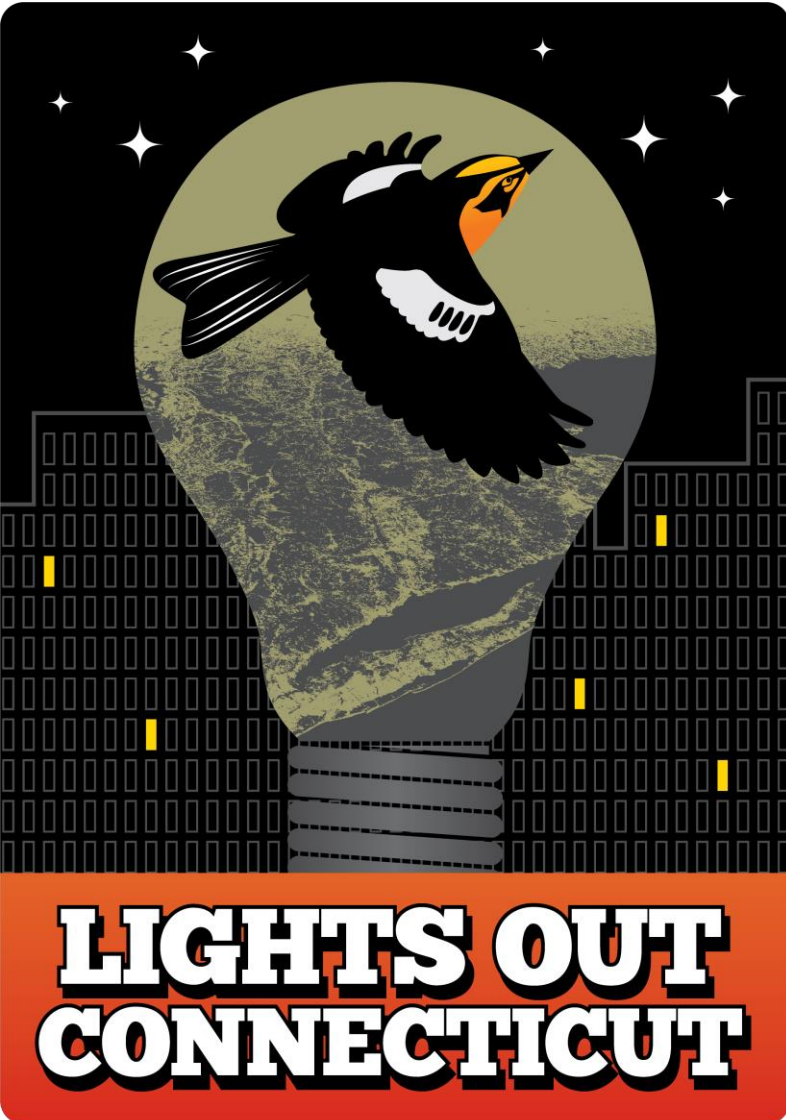


Impact of Light Pollution on Human Health

Craig Repasz







gettyimages

Credit: Bettmann

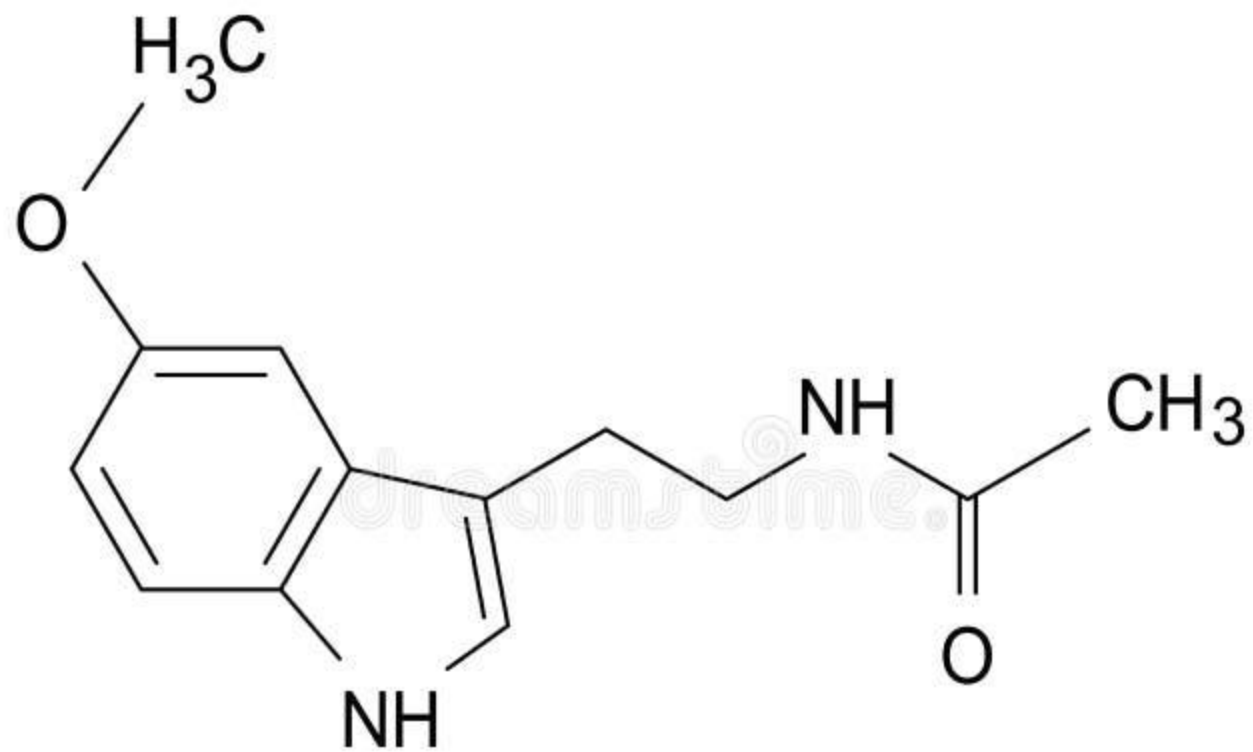
517443184











Melatonin







Light Pollution and Human Health



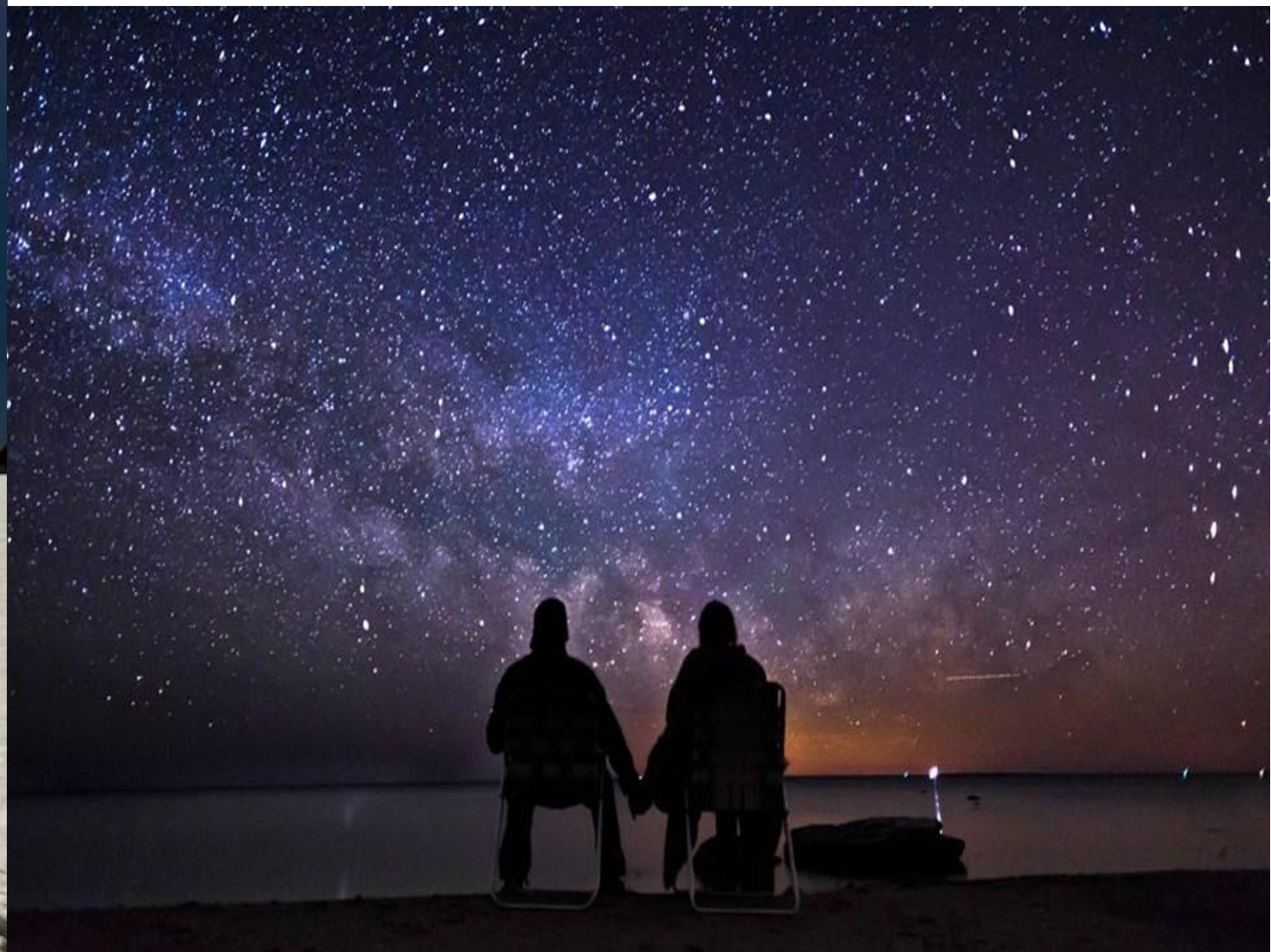
The book cover features a dark blue night scene. A large, leafless tree with many thin, drooping branches dominates the left side of the frame. In the center, two figures are walking from left to right. The figure on the left is wearing a light blue long-sleeved shirt and a dark skirt, and is holding the hand of the figure on the right. The figure on the right is wearing a light blue long-sleeved shirt and dark pants, and is carrying a small, light-colored bag. They are walking on a dark, grassy field. In the background, a bright, glowing horizon line suggests a rising or setting sun or moon, with a few stars visible in the dark blue sky.

Follow the Drinking Gourd

Come Along the Underground Railroad

Written by Wim Coleman and Pat Perrin
Illustrated by Courtney A. Martin





A photograph of a sunset or sunrise. The sky is a gradient of dark blue at the top to a bright orange-yellow near the horizon. Several thin, wispy clouds are scattered across the sky. In the foreground, a dark, silhouetted hill slopes upwards from the bottom left towards the right. Along the crest of this hill, several small, dark silhouettes of people are visible. To the right of the people, a tall, thin crane or mast structure extends upwards. The word "Awe" is written in a large, black, sans-serif font, positioned in the lower right quadrant of the image, partially overlapping the hill and the sky.

Awe







The voice in your head, self-interest, self-confidence, disappears. We feel more connected to a greater whole: society, Earth even the universe.

Dacher Keltner 2003

